

Resin Cylindrical Type APS-CK Series

Operating Distance of 30 mm, Equipped with a Stable-operation Indicator



Features

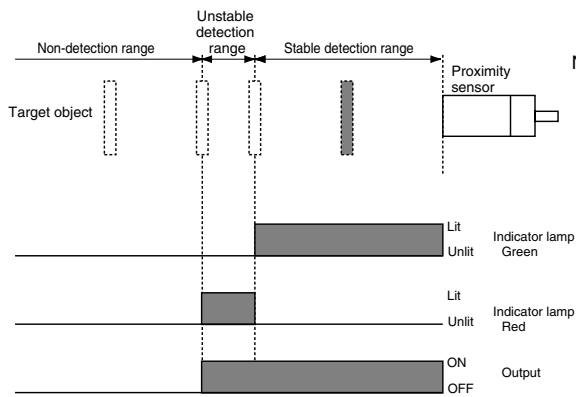
- Operating distance of 30 mm
- Easy settings with green and red indicator lamp.

Type

DC 2-wire type

Shape	Operating distance (mm)	Output type	Model number
Non-embedded type	30	N.O.	APS30-34CK-Z

Operation



Note: With a standard target object, the switching point for the indicator lamp is at a position approx. 72% of the operating distance. If the shape or material of the target object differs from the standard target object, the switching point for the indicator lamp may be shorter than approx. 72% of the operating distance.

APS-GMC

APS-GMD

APS-GM

APS-GK

APS-30/31

APS-CK

APS-S/M

APS-F/U

APS-10~15

APS-CU

CS

DC 2-wire, Non-embedded Type

Effective operating distance	30 mm \pm 15%	
Dimensions (mm)		
Remarks	Accessory Fixing clamp (with 2 screws and 2 washers)	
Output type	NO	Model number
		Price
		APS30-34CK-Z
		¥7,500
Rated operating voltage	DC+12/+24 V (+10 to +30 V) Permissible ripple rate: 3%p-p or less	
Standard target object (mm)	Iron 60 × 60 × 1t	
Rated operating distance	0 to 21.6 mm	
Responding material	Iron/nonferrous metal (operating distance varies with material)	
Differential travel	Approx. 20% or less	
Switching frequency	10 Hz max	
Rated operating current	5 to 100 mA	
Voltage drop	5 V or less	
Leakage current	1.0 mA or less	
Indicator lamp	Operation indication: red or green lamp is lit when output is ON Setting indication: green lamp is lit within the stable detection range	
Operating temperature	-10 to +50°C	
Temperature characteristics	Within \pm 15% (of operating distance at +23°C)	
Withstand voltage	500 VAC, 50/60 Hz (1 minute)	
Insulation resistance	50 M Ω or higher (500 VDC)	
Vibration resistance	Double amplitude: 1.5 mm, 10 to 55 Hz (2 hours in each of X, Y and Z directions)	
Impact resistance	490 m/s ² , within 11 ms (10 cycles in each of X, Y and Z directions)	
Protection grade	IP67	
Casing material	PBT resin	
Lead wire	Oil-resistant vinyl chloride cable 2 m Outer diameter (approx. ϕ 5.9), 0.5 mm ² 2-wire	
Tightening torque	5 Nm or less	
Weight	Approx. 180 g	

APS-GMC

APS-GMD

APS-GM

APS-GK

APS-30/31

APS-CK

APS-S/M

APS-F/U

APS-10~15

APS-CU

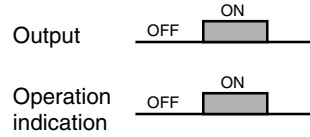
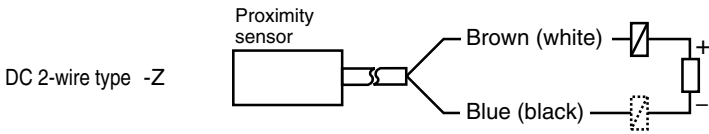
CS

Connection/Operation

(Target object

Not present	Present
-------------	---------

)

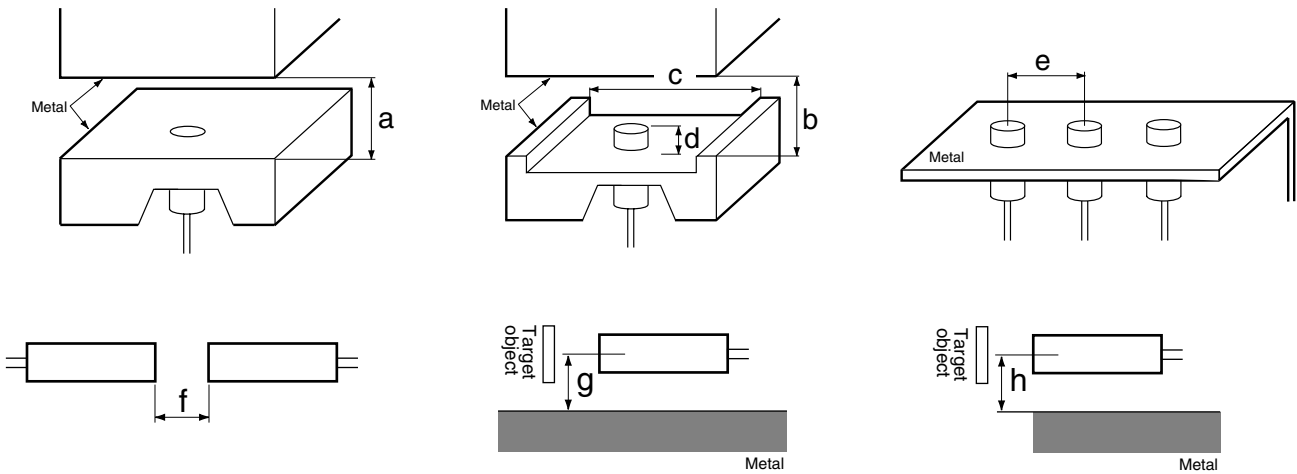


A load can be connected either side (+ or -) of the power source.

Note: indicates a load.

Installation and Influence of Surrounding Metals

A proximity sensor is susceptible to surrounding metals. When installing the sensor, secure a sufficient distance longer than the indicated dimension.

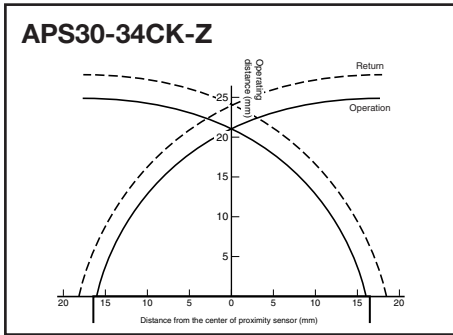


(in mm)

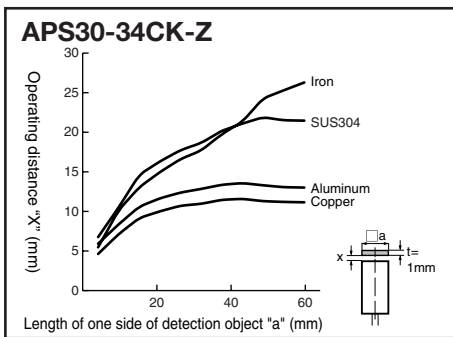
Model number	a	b	c	d	e	f	g	h
APS30-34CK-Z	-	90	136	60	136	120	100	68

APS-GMC
 APS-GMD
 APS-GM
 APS-GK
 APS-30/31
 APS-CK
 APS-S/M
 APS-F/U
 APS-10~15
 APS-CU
 CS

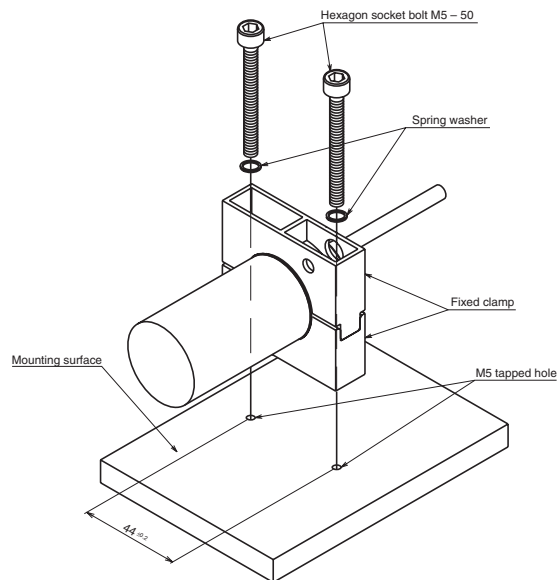
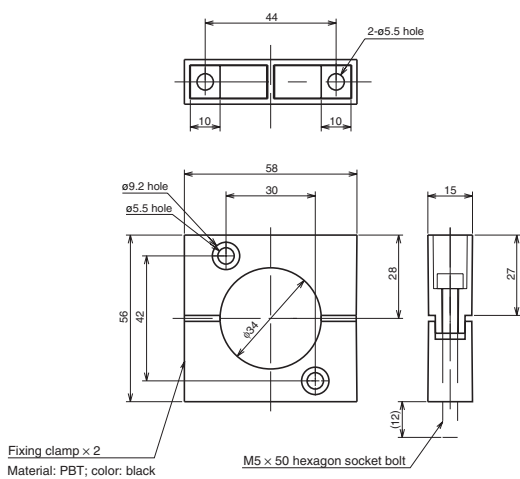
Detection Area Diagram (Representative Example)



Shape Characteristics (Representative Example)



Installation



APS-GMC
APS-GMD
APS-GM
APS-GK
APS-30/31
APS-CK
APS-S/M
APS-F/U
APS-10~15
APS-CU
CS