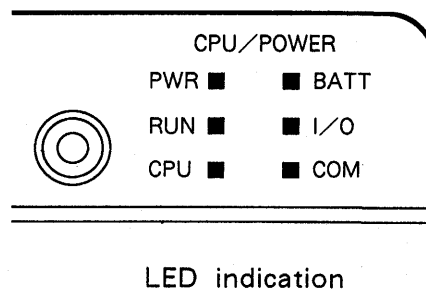
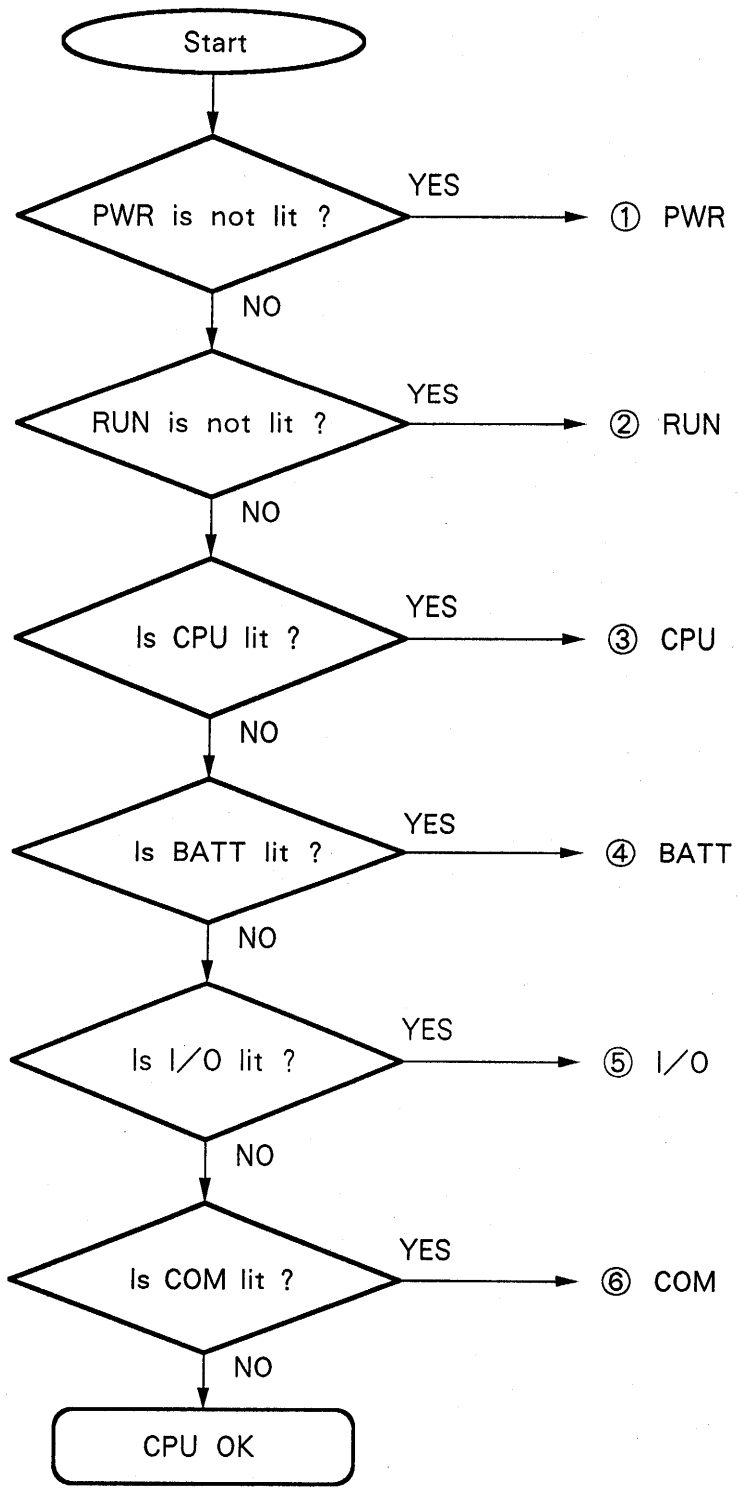


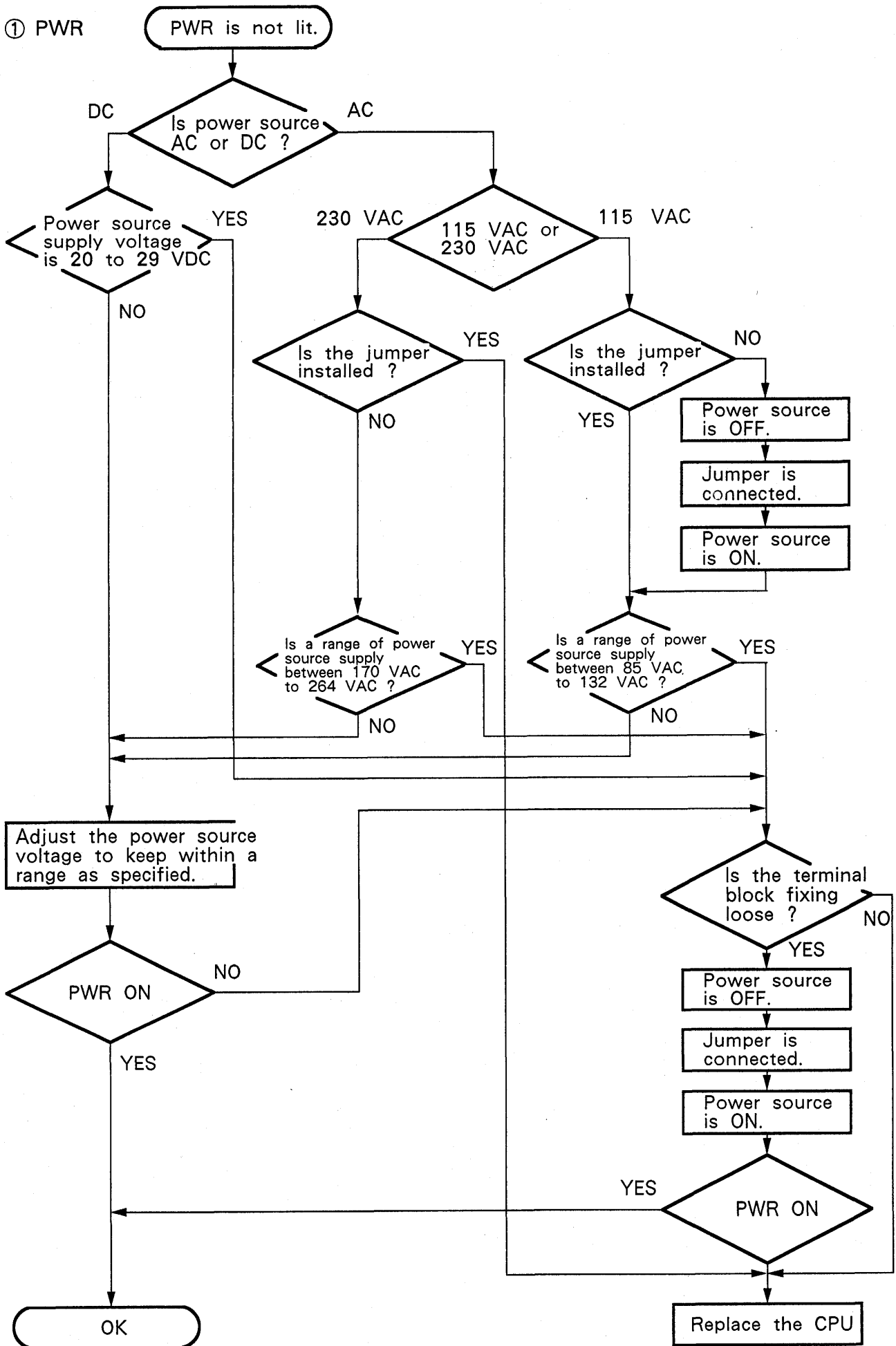
# 10-3. Trouble shooting



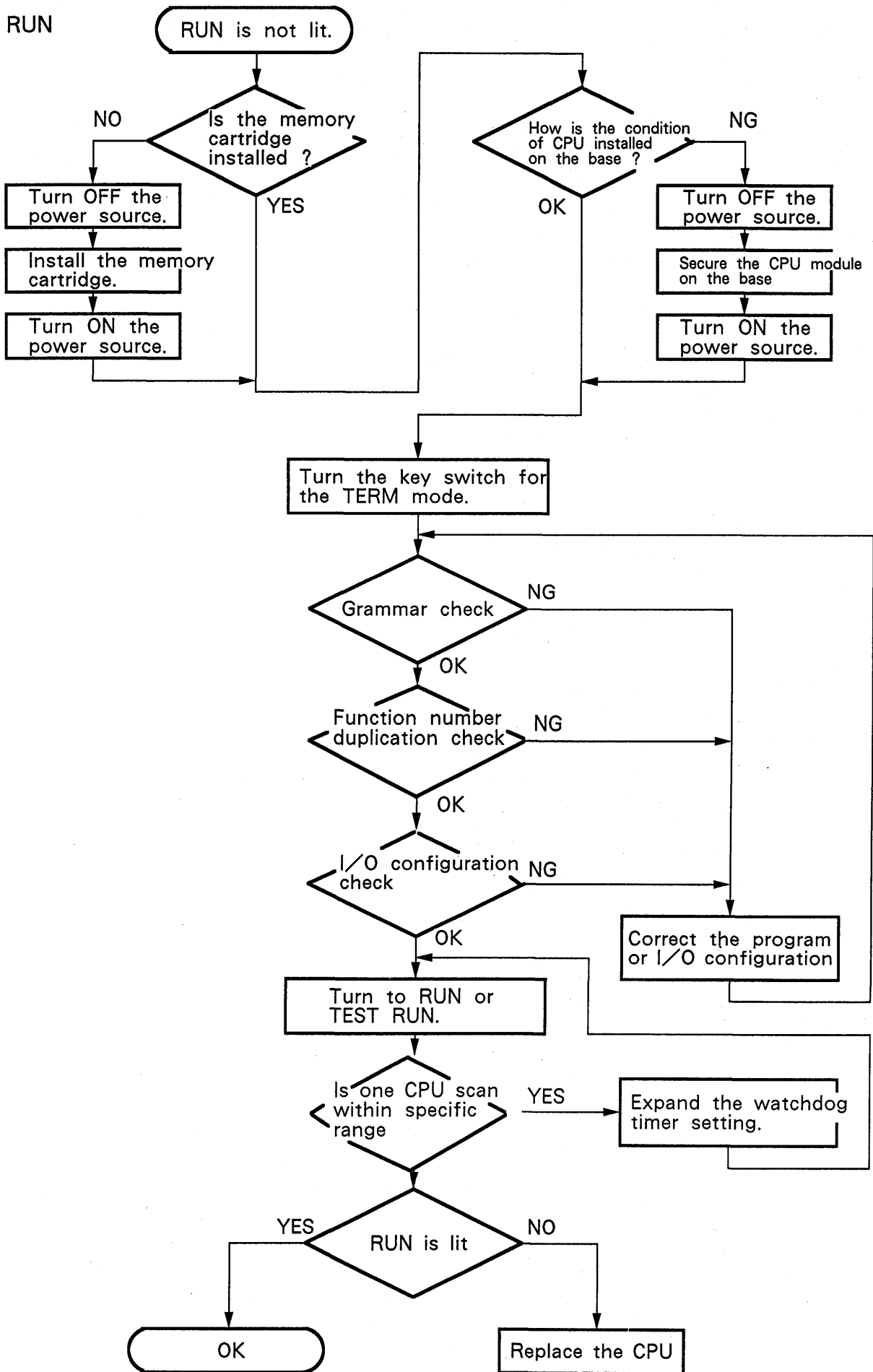
CPU module



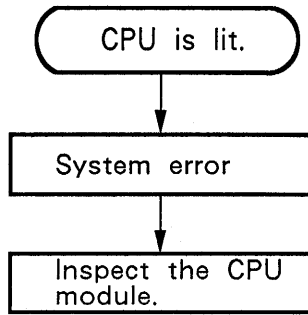
① PWR



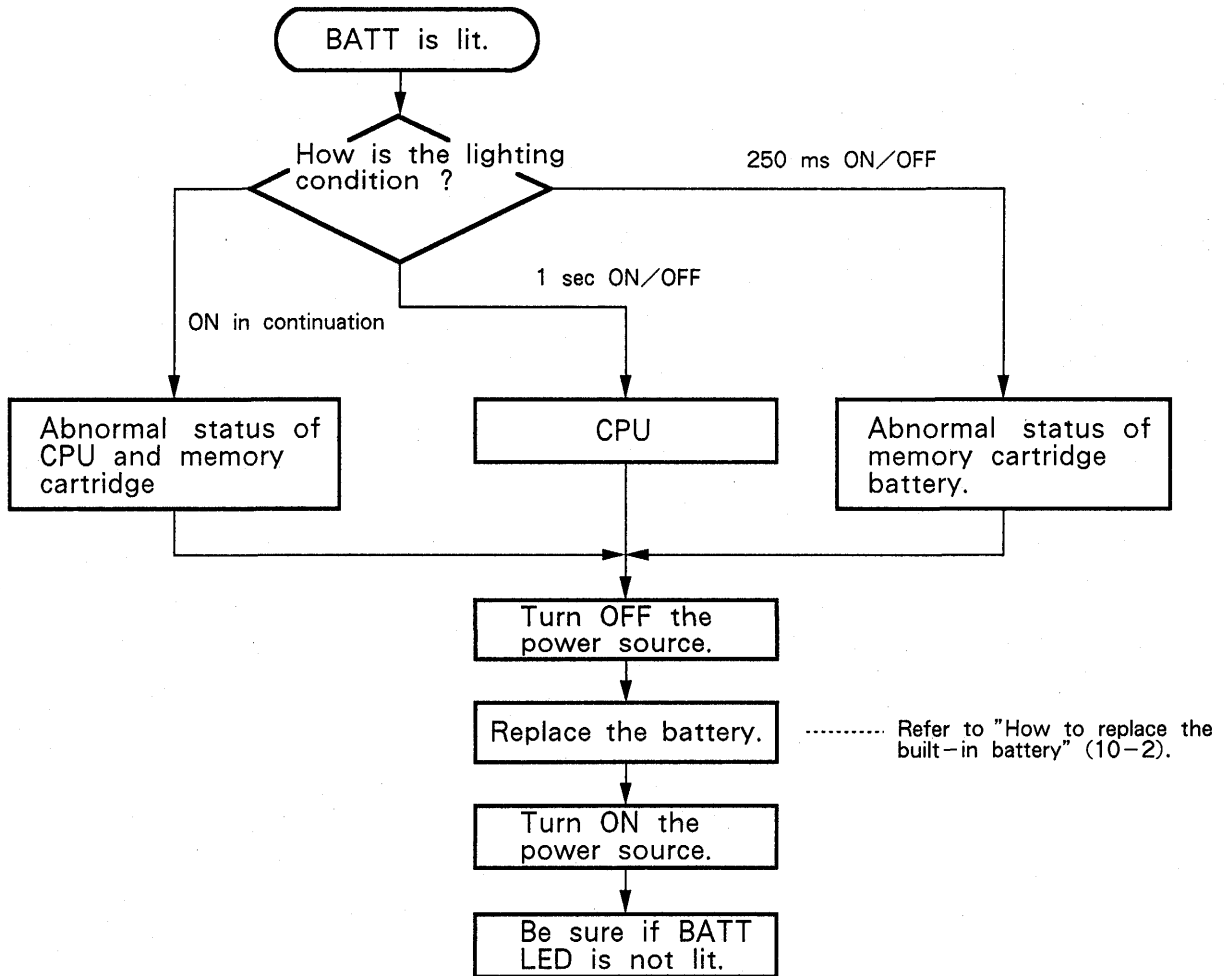
② RUN



③ CPU

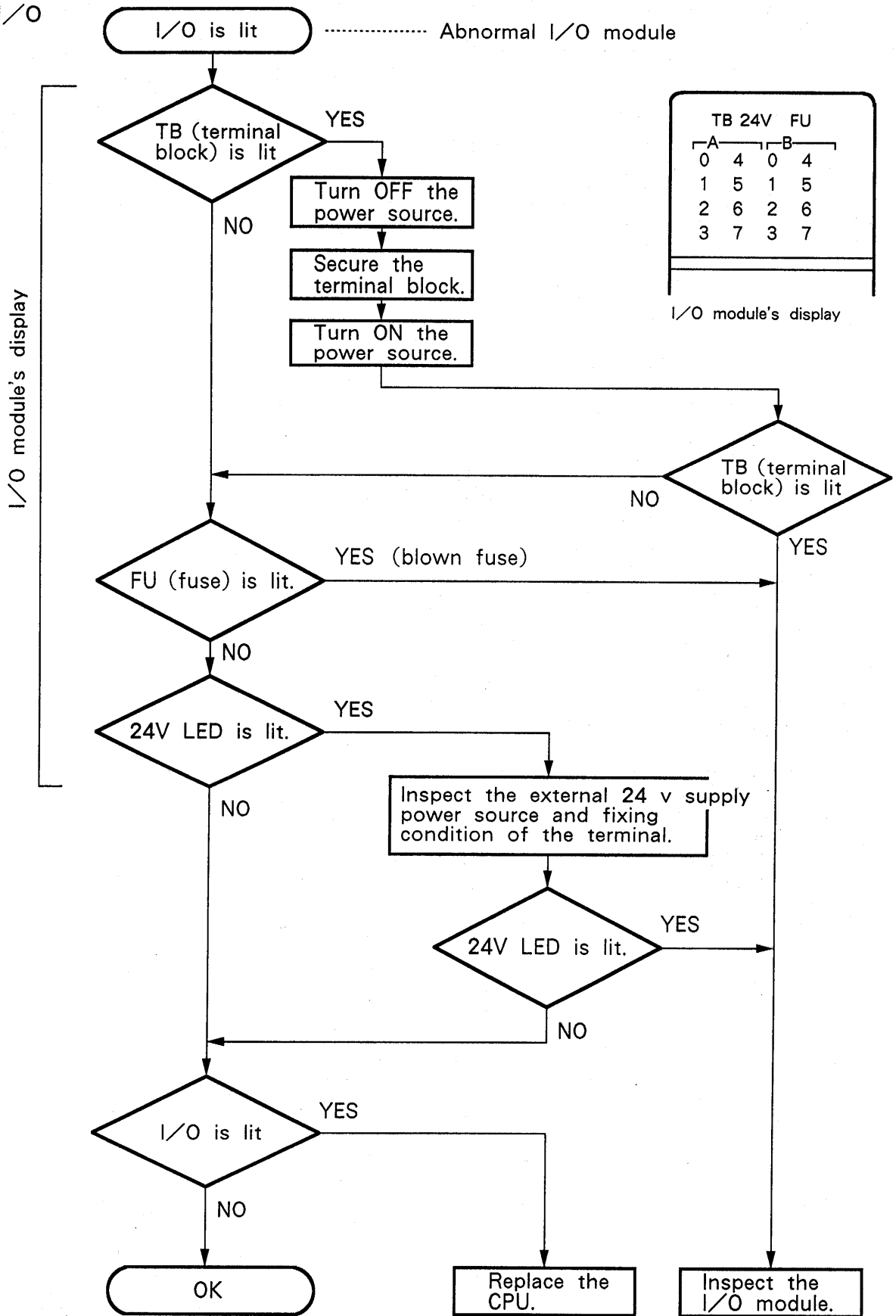


④ BATT : BATT LED will not be lit under the no battery mode (SW 1 ON).



BATT LED will be lit in continuation for SU-5.

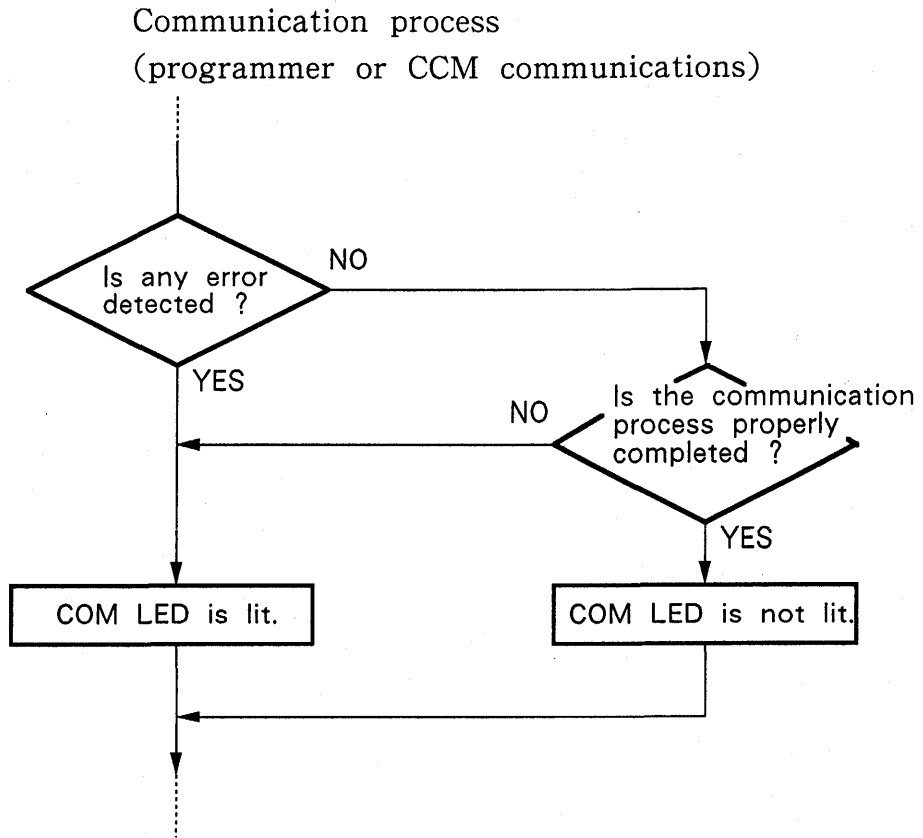
⑤ I/O



TB 24V		FU	
A	B	A	B
0	4	0	4
1	5	1	5
2	6	2	6
3	7	3	7

I/O module's display

⑥ COM



The COM LED will be lit for abnormal communication protocol or data, and will be turned off when the communication is properly completed. It is important to investigate a cause of abnormal communication protocol using a testing equipment such as the on-line monitor.